



# AT THE EDGE MOUNTAINEERING

"Your greatest failure is not to try"

## CONTOURS

## QUESTIONS

Here is the complete question sheet for my [CONTOURS](#) series.

The complete answer sheet is attached to Series 4 in my Online Navigation Course: [NAVIGATION STRATEGIES](#)

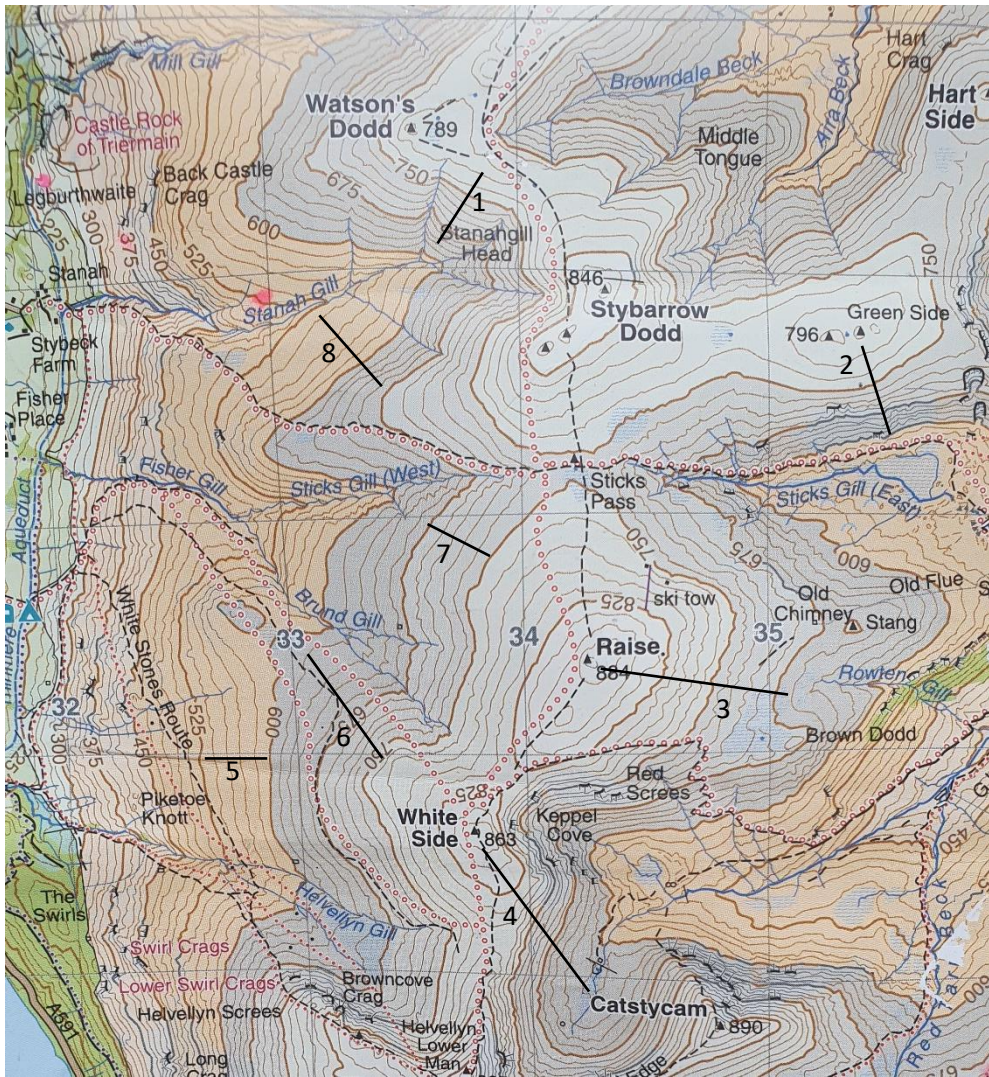
To put these skills into practice and to learn more, take a look at my [Navigation Courses](#) I offer.

All **confirmed bookings** will receive a **10% discount** code to use on [Harvey Maps](#) products from their site.



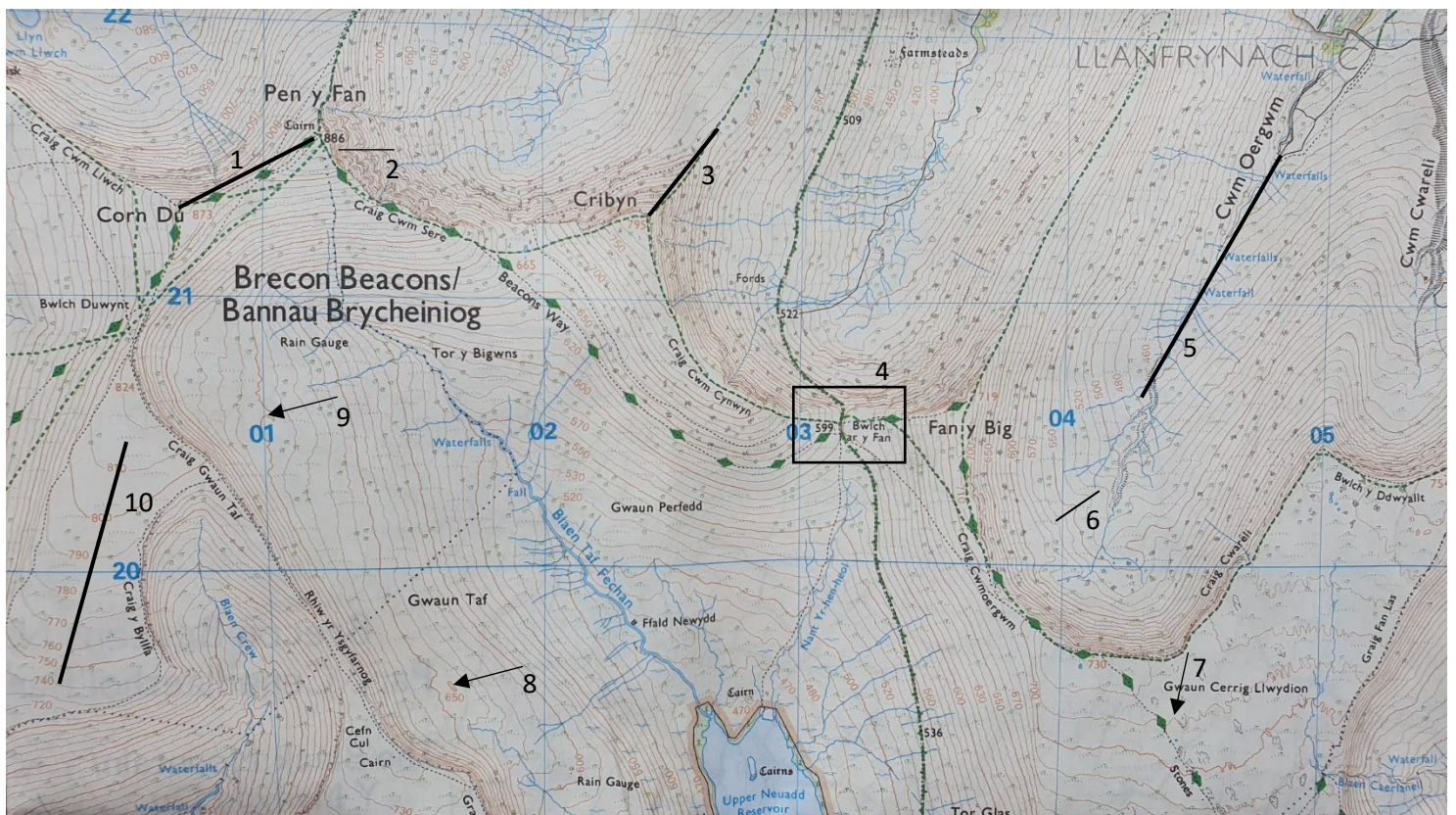


**Q1: What type of slopes are marked with the lines? (use only the contour lines covered by the black lines)**

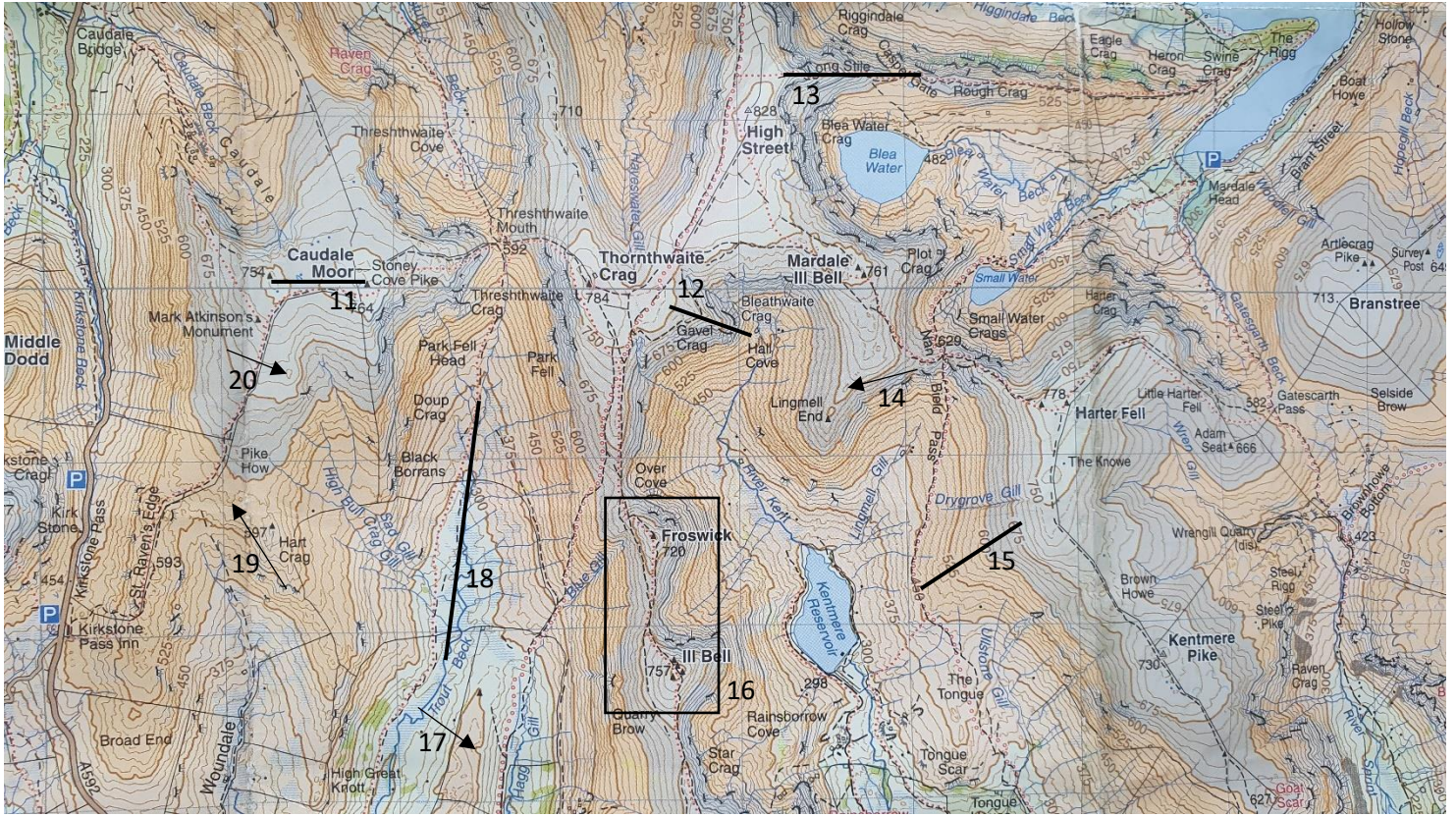


- 1.
- 2.
- 3.
- 4.
- 5.
- 6.
- 7.
- 8.

**Q2: What are the contour features (Small and Major Landforms) marked with the lines, arrows and boxes?**





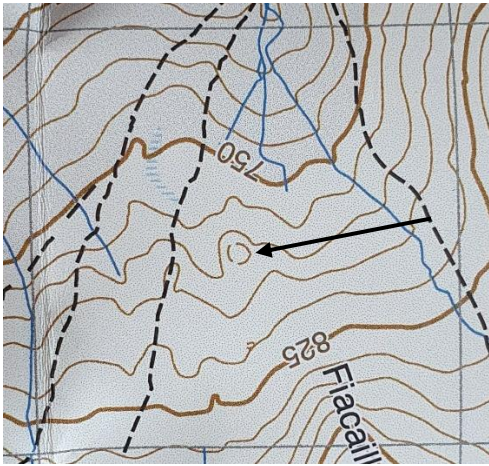


- 1.
- 2.
- 3.
- 4.
- 5.
- 6.
- 7.
- 8.
- 9.
- 10

- 11.
- 12.
- 13.
- 14.
- 15.
- 16.
- 17.
- 18.
- 19.
- 20

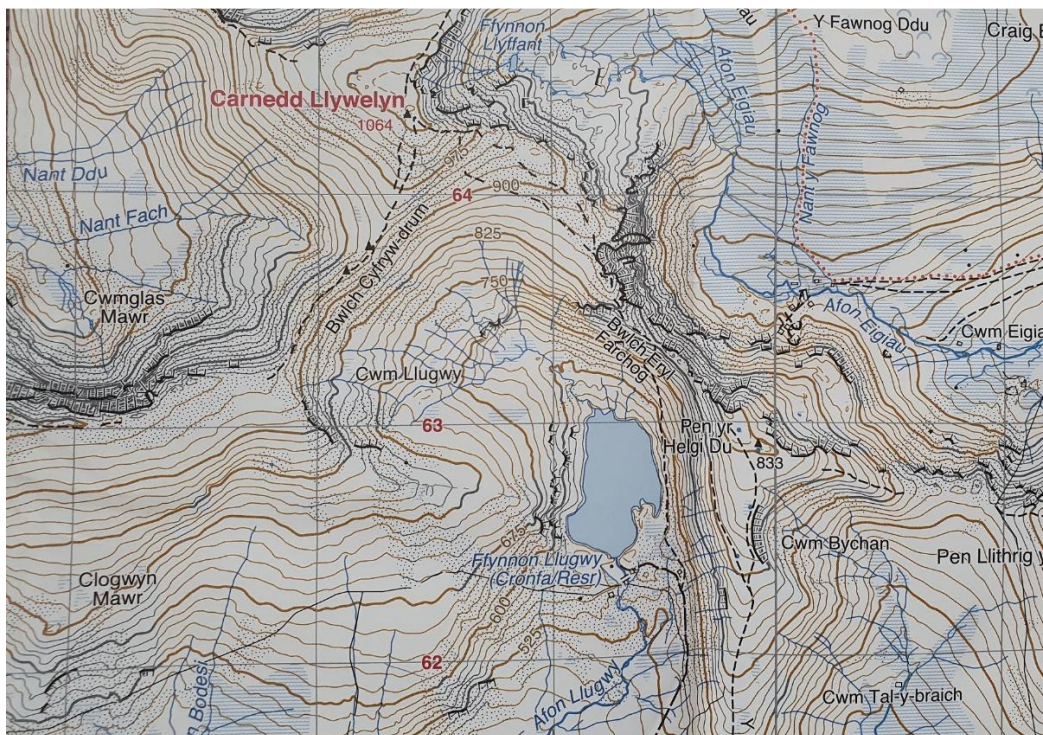


Q3: What type of contour line is this and what feature does it represent?



A:

Q4: Take a look at this picture. Mark on the map below it where you think the picture was taken from.





Q5: I have plotted a walk on OS maps. Below is the map of the walk and the elevation profile. What direction did I do the walk in? (North to South or South to North).

